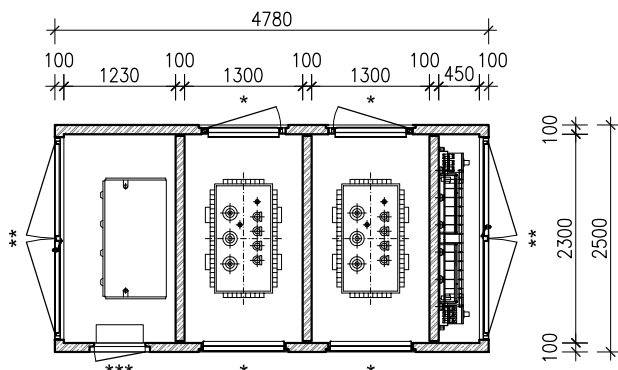
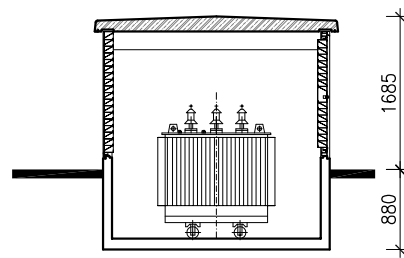
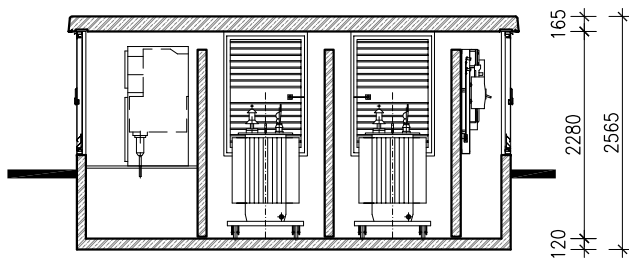
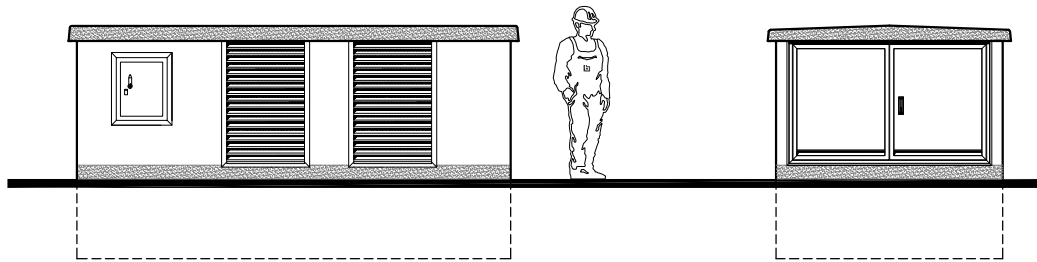


# TECHNICKÝ LIST

## pro UK 2548 s USM

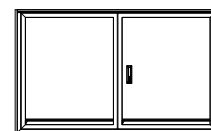


tíha korpusu: 122.2 kN (bez vstrojení)  
tíha střechy: 45.6 kN

\*\*\* 1.varianta  
dveře  
TAM2 44/65 RS  
Fo = /



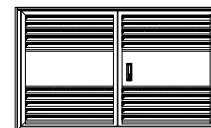
\*\* 1.varianta  
větrací dveře  
TAM2 210.8/125 UT, RS  
Fo = 0.05 m<sup>2</sup>



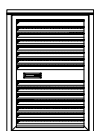
\*\*\* 2.varianta  
dveře  
TAM2 56/69 RS  
Fo = /



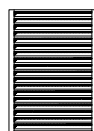
\*\* 2.varianta  
větrací dveře  
TAM2 210.8/125 LU+LO 39.5, RS  
Fo = 0.60 m<sup>2</sup>



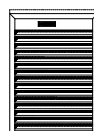
\* 1.varianta  
větrací dveře  
TAML 82.2/125 RS/LS  
Fo = 0.35 m<sup>2</sup>



\* 2.varianta  
pevný větrací element  
LLSF 93/136.9  
Fo = 0.55 m<sup>2</sup>



\* 3.varianta  
odnímatelný větrací element  
LLS 93/131  
Fo = 0.50 m<sup>2</sup>



\* 4.varianta  
zabetonováno  
Fo = /

